



WINTER 2014/2015

Louise Lighthouse

CAMP LOUISE CIRCLE



In This Issue

Officers / Board Members	2
Outgoing President's Message	2
Board Committees	3
Camp Director's Message	3
Reunion Recap	4
Scholarship Fund	5
General Circle Fund	5
Thanks to Our Donors	5-6
Member Spotlights	6-7
Happy Hour Recaps	7
Points on the Circle	8-9
Challah Recipe	10
Free Baby Tshirt	10
Dedication Plaques	10
Circle Sisterhood Tree of Life	11
Mid Winter Get Together	11
Mitzvah Cards Order Form	12
Go Green	13

Mark Your Calendar

Mid-Winter Get Together

Saturday, January 24, 2015
in Columbia, MD
See page 11 for details.

2015 Circle Reunion

September 25-27, 2015

Incoming President's Message

I can't believe it's already the season of winter and snow – Reunion feels like it was just yesterday! If you're anything like I was as a camper and counselor, right about now was when I always started a daily countdown until the start of my next summer at camp!

For those of you who I don't know yet, I'd like to take this opportunity to introduce myself as the new Circle President for the 2014-2016 term. I first stepped through the gates of Louise at the ripe age of 9 as a Unit B camper, and haven't stopped coming back since! I was a CIT in 2003 and made Circle in 2006. I was a Unit A bunk counselor and a member of the Folkdance and Swim departments, Folkdance Department Head, Religious Services Coordinator, and Unit A Unit Leader. Since 2010, I've been a volunteer throughout the summer and have been as involved with Camp as I can be! In "real life" I work at a CPA firm in Washington, D.C., specializing in audits of not-for-profit organizations. Even though I grew up in the Philly area, after college I made it a priority to move down to the DC area to be closer to my camp friends!

Camp has always been such an important part of my life, and joining the Circle Board was a natural extension of my desire to give back. I joined the Board in 2009 and served as Treasurer and as a part of

several planning committees. From Reunion, to Happy Hours, to Fundraising, the Directory, and so much more, none of this would be possible without the work of everyone on the Board. One of my favorite aspects of being on the Board is getting to know and work with so many Circle members and learn about past generations of camp.

I'm so excited for the upcoming term and getting to know even more of you, and I am honored to be able to give back to my Circle family. If you ever have any questions, suggestions, concerns, or just want to become more involved, feel free to contact me or any Board member. Thanks to the Lighthouse Committee for your work on this latest edition – even though it might be snowing outside, I know that reading through these articles will take my thoughts right back to Camp!



Andie Snyder

President, Camp Louise Circle

Officers

President - Andie Snyder

andies@camplouisecircle.org

VP of Membership - Iris Maslow

irism@camplouisecircle.org

VP of Reunion - Jana Kalish Hummel

janak@camplouisecircle.org

VP of Fundraising - Jen Falik Rains

jenr@camplouisecircle.org

Treasurer - Dani Hercenberg

danih@camplouisecircle.org

Secretary - Jane Rice

jrice@camplouisecircle.org

Parliamentarian - Sara Berlin

sarap@camplouisecircle.org

Board Members

Debbie Apple

debbiea@camplouisecircle.org

Jay Bell

jayb@camplouisecircle.org

Paula Bragg

paulab@camplouisecircle.org

Alyssa Chircus

alyssac@camplouisecircle.org

Jessica "JKat" Katz

jkatz@camplouisecircle.org

Alison Kaplan

alisonk@camplouisecircle.org

Ayme Lederman

aymel@camplouisecircle.org

Lesley Levin

lesleyl@camplouisecircle.org

Erica Levinson

erical@camplouisecircle.org

Rachel Gutin Medvin

rachelgm@camplouisecircle.org

Randi Moody

randim@camplouisecircle.org

Kate Perelman

katep@camplouisecircle.org

Molly Van Grack

mollyvg@camplouisecircle.org

Erin Weinblatt

erinw@camplouisecircle.org

Advisory

Alicia Berlin

aliciab@camplouisecircle.org

Lisa Blatt

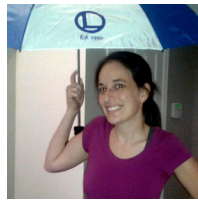
lisab@camplouisecircle.org

Bobbie Miller

bobbie@camplouisecircle.org

Outgoing President's Message

Lisa Blatt Bennett -- Circle 2005



Another amazing Reunion has come and gone and everyone who attended was able to take with them great memories that will be with us forever. This Reunion could not have been possible without the amazing VP of Reunion Jana Kalish and all of her fantastic committees. Bobbie Miller, Jan Abraham, Alison Kaplan, Lesley Levin, Jay Bell, Sara Berlin, Ayme Lederman, Paula Bragg, Karen Levin, and the many people who led activities throughout the entire fun-filled harvest weekend- thank you for all of your hard work!

This year at reunion we honored two families very near and dear to our hearts. We presented a plaque to Jan Abraham in honor of her family. This past February, we lost our good friend Jane Barnett Abraham. When talking to Jane's family and friends about her favorite parts of camp, Jane's love of the rose garden was a common theme. It only seemed appropriate to place a plaque in her and her husband's honor in the rose garden- her favorite spot in camp. We also honored Bobbie and Dave Miller at reunion. Bobbie and Dave dedicated 46 years to camp and we can truly never thank them enough for all that they did. Bobbie and Dave have retired from full-time work at Camp Louise, but it was great to catch up with them at Reunion and hear about their world travels and adventures. We presented a plaque to Bobbie and Dave and unveiled a plaque placed on the outside of the Post Office. Be sure to check both plaques out

the next time you are at camp!

We have several members stepping down from the board this year. I want to thank them for all of their dedication during their time on board. Lauren Winiker Kaplan completely redesigned our beautiful new circle website as well as established an official Camp Louise Circle presence on social media. Jan Abraham served on many committees the past three years including many different aspects of planning the past few circle reunions. Lisa Yarmis just finished her 2nd term and spent the last 6 years organizing plaques and mitzvah cards. Ali Brodsky helped on several committees including History Day. Thanks for all your time and dedication! Last but not least- Rachel Sanderoff. As Rachel's successor as president of Circle, I have learned a lot from her that I hope to now pass on to your next president Andie Snyder. Andie's dedication and commitment to Circle has earned her a great deal of respect from many- including me! Good luck Andie! We are lucky to have you as our President!

A BIG Mazel Tov to our recently elected board members: Alyssa Chircus, Jessica Katz, Molly Levin Van Grack, Rachel Gutin Medvin, Randi Moody, and Erin Weinblatt. With these new faces, and our existing board members, it is going to be a fantastic year!

It is hard to believe that my term as Circle president has come to an end. Thank you to everyone for an amazing last 2 years. My time on board has been incredible and I am excited for my new role on the advisory board as past president where I can watch the exciting places that Andie and her new board will go!

Board Committees

Want to be more involved with planning Circle events and activities? Join a Board committee! Contact the Vice President for more information:

Reunion Committees

Vice President: Jana Kalish
janak@camplouisecircle.org

- Programming
- Food
- Housing
- Mementos

Membership Committees

Vice President: Iris Maslow
irism@camplouisecircle.org

- Lighthouse
- History Day
- Nominations
- Social/Special Events
- Marketing/Online Resources
- Historian

Fundraising Committees

Vice President Jennifer Falik Rains

jenr@camplouisecircle.org

- Fundraising Campaigns
- Acknowledging Donations
- Plaques/Leaves
- Mitzvah Cards

Camp Director's Message

When I became director, I could never have imagined all of the work throughout the year that goes into the summer – a summer of 7 weeks for campers and a little bit more for staff. Planning for over 300 days for a summer that for so

many of us goes by too quickly. A summer that campers and staff live for all year, counting down the days until we are back in 21719. A summer without technology, a summer where we can catch up with old friends and meet new ones, a summer where we can create the truest versions of ourselves, a summer where amazing lifelong memories are made.

A favorite time of the summer for so many of our staff comes when we gather in the Library for our Circle Ceremony. In the summer of 2014, we welcomed 39 new Circle sisters and brothers into our family. As I think back to this ceremony, I can't help but smile as I remember looking out at the pride that these 39 people had. Some of them had been waiting for that day since they were campers in Unit A. Others joined us on staff just three short years ago but immediately felt the incredible sense of community that we have at Camp Louise. Either way, the ceremony is special for so many.

Each year during the Circle Ceremony, we read from the original charter which talks about the bonds of friendship and loyalty... and of course Aunt Lil's famous words: "We welcome you into the Circle. Now you belong to us, Camp Louise. Wherever you go, live the good you have learned here!"

In everyone's busy, hectic, fast-paced lives, I hope that each of you can take a moment to reflect on your own time at camp whether it was last year or 40 years ago. Call a camp friend to reminisce about a story that will surely bring you either to tears or laughter, send a camp friend a note thanking them for the influence they had on you

at camp, or flip through an old camp photo album and smile at the memories. We all share an incredible connection that can only happen in 21719. Always remember...

Alicia Berlin
Director,
Camp Louise



Rhiannon Westthorp-Janz and Sara Berlin spoke about the Circle of Loyalty and Circle of Friendship at the Circle Pinning Ceremony. See their speeches below.

Circle of Loyalty

Sara Berlin – Circle 2012



Loyalty can be defined as a strong feeling of support or allegiance. There is loyalty to an individual, loyalty to yourself or to a partner, loyalty to a set of ideals, loyalty to a community, and loyalty to a group, to name a few. Loyalty encompasses faithfulness, devotion, commitment, and reliability. Though loyalty comes in different forms, it always comes back to these words – faithfulness, devotion, commitment, support.

When I think about camp, and specifically about Circle, these words all ring true. It was once said that "The greater the loyalty of a group toward the group, the greater is the motivation among the members to achieve the goals of the group, and the greater the probability that the group will achieve its goals." Our charter was written with this thought in mind, stating: "Drawn together by the common bond

of friendship and loyalty to the organization of which we are a part, we, the third year counselors of Camp Louise, have formed an association which shall endeavor to further the highest ideals of friendship between women and skills of counselling. And because our energies are directed toward one central goal, we have resolved to call ourselves The CIRCLE."

What does this all mean, specifically as it relates to Circle? It means that Circle is made up of a group of people who love and are passionate about camp. It means having a support system when you need it most. It means devotion to a place that has become home for so many people, across generations and across continents. Loyalty means sharing a common goal, sharing a commitment to continue to make camp an incredible place for generations of girls still to come. Loyalty means giving our best to camp, and knowing that camp will give its best in return.

Circle of Friendship

Rhiannon Westthorp-Janz -
Circle 2013



I want to start with a quote, that is extremely relevant to my life, and I think most of your lives as well. I think it sums up

the Circle of Friendship perfectly. In fact, I love it so much that I had Hannah Hamer, who pinned me last year, paint it on the back of my phone case.

"You will never be completely at home again, because part of your

heart will always be elsewhere. That is the price you pay for the richness of loving and knowing people in more than one place."

Many of my closest friends are people I met at camp. And we live VERY far away, like 19,000 miles. But it doesn't matter. The distance, the time difference, they don't matter. I cannot imagine my life without them. These are people I call, text, Skype, Viber, FaceTime, WhatsApp and of course Snapchat for any and all reasons. A lot of the time to check that the outfit I am wearing is appropriate.

So yes, part of my heart is always elsewhere; it is wherever in the world my loved ones are, and of course a little piece always here at Louise.

The richness of loving and knowing these people, and all of you in this room, are the definition of what Circle means to me. The love, support, passion, and of course, understanding.

Camp friends see us during our highs and lows (ropes course reference), they join us in doing the silly weird camp things, they speak "camp" and they understand what camp means to you. But most importantly they love us, for us – because at camp we can be "just us."

This is the Circle of Friendship; the people in this room now, and those who sat in here before us. It's something that we all share in, and something each of us should cherish and celebrate. And as for the price the quote mentioned, well personally I think it's a pretty good bargain, and I'm more than happy to pay it.

Reunion Recap

On September 12th, over 200 Circle members, family, friends, and guests gathered at Camp Louise for the 2014 Circle Reunion. The theme for this year's reunion was "Fall." As reunion attendees arrived they were welcomed by a dining hall decorated to fit the theme with pumpkins, scare crows and piles of hay.

Throughout the weekend, attendees were able to catch up with old friends and create new ones while enjoying the various activities that the reunion provided. From Friday night folkdancing and Saturday morning Shabbat services to Sunday morning brunch, it was great making new memories while reminiscing about wonderful days as a Camp Louise camper or staff member. This year we added tie-dye back to the schedule and added activities such as caramel apple making in cookery and paint-your-own pumpkin in arts and crafts.

Also new for this year, we put a spin on the raffle requesting that items that were up for auction be items of higher quality. From this effort, Circle was able to almost double the amount normally earned from the raffle.

I would like to thank all of you for coming and taking part in the wonderful weekend. I would especially like to take the opportunity to thank all of the volunteers that helped make the weekend go off without a hitch! Everyone knows that without volunteers the weekend would not be so successful.

Thank you to everyone who filled out the post-Reunion survey. We received excellent feedback and suggestions, and I'm already

looking forward to planning the next Circle Reunion. I hope to see you all back in Cascade on September 25!

Jana Kalish Hummel
VP of Reunion



Update on Scholarship Fund

Several years ago, a number of generous Circle members created a fund to make Circle Reunion more affordable for members with financial challenges. In our ever-changing economic environment, more and more Circle members have needed to utilize these funds to make attending Reunion a possibility in recent years. In 2014, we are pleased to announce that 11 of your fellow Circle members were able to attend Reunion at a more affordable cost, and we know our Reunion experience would not have been the same without them there. With all things, this fund continues to need replenishing in order to support Reunion scholarships for 2015 and for many years in to the future. Please consider a donation to the Reunion Scholarship Fund to help ensure all of your Circle sisters and brothers will be able to attend Reunion for many years to come! Visit camlouisecircle.org for more details on how to give back.

General Circle Fund

Each year, the Board selects one area in which to focus fundraising efforts for the year. For 2015, the focus will be to raise funds to support general Circle operations. In addition

to supporting the overall administration of Circle, these funds are used to give directly back to Camp in a variety of ways. Past contributions to Camp have included the Dining Hall Sound System, Summer Program (Tzofim, Take A Walk in Her Shoes, Jewish Chicks Rock, and a variety of other specialists), and staff appreciation gifts at the End-of-Camp Banquet. Your support will allow Circle to continue to have an impact on the summer experience for campers and staff for many years to come!

Looking for other ways to support the General Circle Fund? Consider purchasing a Leaf on the Circle Sisterhood Tree of Life, Dedication Plaque, License Plate, or Mitzvah Cards! Details on each can be found through this issue of the Lighthouse and on the Circle Website.

How Do I Give to Circle?

www.camlouisecircle.org

Contributions can be made for any purpose – to support General Operations, to support the Reunion Scholarship Fund, or anything else you'd like Circle to support at Camp! Remember to save your cancelled check or bank statement for tax purposes. If you need additional documentation for tax purposes or have any other questions relating to contributions, please contact Circle Treasurer Dani Hercenberg (danih@camlouisecircle.org). All checks should be made payable to "Camp Louise Circle."

THANK YOU TO OUR 2014 DONORS

General Circle Fund

Debra Apuzzo
Joan and Robert Block
Joan Bornstein and Ben Giller
Paula Bragg *
Carrie Brown
Faith Brown
Miriam Brown
Sarajane Brown
Cobi Edelson Cohen
Melissa Deutsch
Vicky DeVal
Wendy Fredericks
Laurie Galfond
Wendy Gill
Anne Silberman Golfer
Randi Green
Becky Gutin
Jana Kalish *
Lauren Kaplan *
Amy Knowles
Lawrence Kravitz
Lynn Kunst
Debra Ladwig
Marla Lewis
Marjorie Lyn
Margery Meltzer
Bobbie * and Dave Miller
Laurie Rauseo Okin
Marilyn Olarsch
Ronda Pozoulakis
Jane Rice *
Betsy Rosenthal
Jill Rosenthal
Dorothy Rudin
Rachel Sanderoff *
Sherie Seff
Andie Snyder *
Stefanie Steinberger
Erin Weinblatt *
Becca Wolf

Reunion Scholarship Fund

Debbie Apple *
Lisa Blatt Bennett *
Pam Friedman
Debi Goltz
Ellen Mae Kaye
Ayme Lederman *
Melanie Levs
Elissa and Missy Sachs-Kohen

...Donors Continued

Stephanie Sloane
 Andie Snyder *
 Lisa Yarmis *
 Robin Zenick

Camper Scholarship Fund

Debbie Apple *
 Rita Drapkin
 Lynne Dreyer
 Wendy Feldman
 Marilyn Kellam
 Ayme Lederman *
 Sybill Modispacher

Arts & Crafts Fund

Sara Berlin *

**Leaves on the Circle Tree of Life and
Dedication Plaques**

Andi Abrams
 Steve and Sherry Berlin
 Alicia * and Neil Berlin
 Sylvia and Ron Carmel
 Cicely Finkelstein
 Joan Goldman
 Shirley Goodman
 Sally Henning and Family
 Serene Israel
 Marla Lewis
 Sara and Barry Marcus
 Jane Rice *
 Lisa Yarmis *
 License Plates
 Marc Friedman
 Geri Kallens
 Mary Maslow
 Mitzvah Cards
 Barry Friedman
 Serene Israel

* 2014 Board Member

Every effort has been made to ensure the completeness of this list, our apologies if anyone was left off inadvertently. You can be sure that every dollar counts!

**Transplant
Member Spotlight**

Jay Johnson Bell



(my real-world name is
 Jewel)

Location: Baltimore, MD

Age: 33

Circle Year: 2004

Job in the real world:

Being a mom! I am also a clinical social worker. I do mental health therapy at an outpatient mental health clinic in Baltimore.

What brought me to camp:

The year before I started at camp, a college friend of mine kept talking about his summer plans and how he was excited to go work at Camp Louise. He said that he had been a camper at Airy when he was younger and that he was excited to go work at the girl's camp that summer. I believe he worked in the post office and in Canteen. That summer came and went and he told stories for DAYS about being at camp. Later that school year the summer jobs/camp fair came to the college. I was literally dragged to the fair where I met Bobbie and Steve. They had all sorts of info and pictures available. I just couldn't resist once I saw all that camp had to offer! I completed my application that day! The rest is history!

Summers at camp: My first summer was 2002. I was in Unit F; first session I was in Drama Department and

second session I split Drama and Dance Department. In 2003, I was a CIT counselor and split Dance and Drama Departments. I made Circle in 2004 and was a counselor in Unit F and Assistant Dance Department Head. In 2005 I was the Unit Leader of B and in 2006, the Unit Leader of E. From 2007-2008 I volunteered. Then in 2009, I worked for half of the summer as Senior Camp Division Head. From 2010-2012 I volunteered again!

Do you still work at camp? No I do not.

Favorite camp memory: My favorite camp memory, wow, there are a lot! One that stands out was during my 1st summer, we did a team building training on the ropes course during orientation. I learned things about myself that I'd never known before. That was an awesome experience that I'll never forget!

Hobbies: Dance, arts & crafts, seeing movies and spending time with friends and family.

Something I am looking forward to in 2015: I am looking forward to having a fresh new outlook on life and exciting changes in my career.

New Member Spotlight

Rachel Cagan



Location: Washington, DC

Age: 24

Circle Year: 2014

Job in the real world: Media Relations at the American College of Cardiology

What brought me to camp: My parents originally decided to send

me to Camp Louise. The amazing friends I quickly made were what kept me coming back.

Summers at camp: 3 years-
Swim and Athletics

Do you still work at camp? Yes! I've volunteered the last couple summers and look forward to doing it again in 2015.

Favorite camp memory: The first day of camp every year is something I really remember. The anticipation while waiting in the car to finally be able to walk into camp and reunite with friends always made me so excited.

Hobbies: Does food count as a hobby?

Something I am looking forward to in 2015: I'm pretty much already over winter even though it hasn't officially started yet. So right now, I'm most looking forward to spring coming back around again and bringing warm weather.

Golden Circle Member Spotlight

Laurie Young



Location: Arlington, VA

Age: 64

Circle Year: 1970

Job in the real world:
Psychotherapist

What brought me to camp: I came to camp at age 9, following my brothers who went to Camp Airy. My mother also went to Camp Louise.

Summers at camp: I worked for

the summers as a counselor in the drama department and in my last summer I was the head of the department.

Do you still work at camp? No, but I would be willing to, even as a volunteer.

Favorite camp memory: You have to be kidding -- I don't know how I can find just one memory. When I think of my 10 years at camp I am flooded with memories. I think in general that any time we were singing was my favorite time. I treasure the years I spent at camp, and I can't think of anything else I experienced growing up that had as much impact on who I am today than my years at Camp Louise.

Hobbies: Theater, music, reading and staying in touch with friends on Facebook.

Something I am looking forward to in 2015: This year I had both knees replaced, so I am looking forward to being able to walk and dance without pain.

Happy Hour Recap

Circle and Leaf members from Baltimore and DC met up at two separate Happy Hour events recently. Baltimore residents reunited on Oct. 29th at Hudson Street Stackhouse in Canton, while DC locals met at Vapiano Chinatown on Dec. 11th. The events were the first happy hours planned through Camp Louise Circle and in conjunction with Camp Airy's Order of the Leaf.

"For our first time doing this, we had a great turnout," said Order of the Leaf Campus President, Greg Friedman. At each event, the turnout was about 15-30

people, ranging from young members to camp veterans.

While these events are the first attempts at a new tradition between two camps' alumni organizations, Circle is looking for the next city to plan one. Philly? A city in Florida? If you'd like us to organize a happy hour in your hometown, contact irism@camplouisecircle.org. If you coordinate your own Happy Hour with your close friends, be sure to send us pictures so we can feature you on our website.

Baltimore Happy Hour



DC Happy Hour



Points on the Circle

Weddings

Lauren Scher (Circle 2004) married Matthew Pollack on October 12, 2014, at the Delaplaine Visual Arts Center in Frederick, Md. Lots of camp friends were on hand to help them celebrate their big day. Lauren was in the folk dance department at camp. She and her husband currently reside in Washington, D.C.



On November 8, 2014, **Lisa Gerton** (Circle 2005,) daughter of **Karen Gravitz Gerton** (Circle 1974) married Evan Jacobson at the Park Hyatt in Washington, D.C. They were surrounded by many wonderful camp friends spanning many decades.



Births

Judi Rosenberg Edwards of Baltimore, Md., but now living in Scottsdale, Ariz. wrote to announce that her second grandchild, Jacob Aidan Snyder, was born on April 18, 2014, joining first grandchild

Maya Isabelle Snyder, who was born on June 29, 2012. Judi was a camper at Louise in the '60s and worked in Arts & Crafts at both Airy and Louise, making Circle in 1993.

Melissa Weintraub Pezza and husband Gregory Pezza, of East Greenwich, R.I. welcomed third child, Taylor Pezza on July 7, 2014. Taylor's brother is Zane, 3, and her sister, Hayley, is 6. Melissa was at camp from 1988-1995.

Stacie Mirkin Boccanfuso (Circle 2002) and her husband welcomed their son Jacob Anthony Boccanfuso on September 13, 2014. Jacob's big sister is Sydney. Stacie was a 1998 CIT and worked in both the Folkdance and Swim departments at camp. The family lives in Reisterstown, Md.

Andi Schwartz Abrams (Circle 1968) of Fort Myers, Fla., became a grandma on October 1, 2014 to a beautiful baby boy, Declan Markus Abrams. Proud parents are Jake and Justine Abrams. Jake went to camp Airy from 1985 through his CIT summer of 1995 and was a Counselor at Airy in 1996. Andi is the Assistant Director, Overall Operations, at Camp Louise.

Marla Hertz (Circle 2004) and husband Juan Calix wrote to say "Big life event over here!" They had triplet boys on Monday, November 3, 2014. Their names are Juan Mateo, Julio Selig and Emile Mercer. They are in the NICU and progressing like champs. Marla was a CIT in 2001 and was in the creative writing department at camp. The family lives in St. Louis, Mo.

Keri Hoffmann (Baxter) of Pittsburgh, PA is happy to announce that Evan Thomas Hoffmann was born on

December 26 and was 7lb, 4oz and 21 inches long. He joins big sister Elaina Sue Hoffmann, who will be 6 in January. Keri made circle in 1997 and was in the Music department.

Valerie Natasha McQuiston-Starrett daughter of circle member **Terry Starrett** gave birth to Ezra Gordon on November 23 4:30 pm 8 lbs 12 oz. Pashia adores her baby brother.

Congratulations

AJ Lynn (Circle 2005) sent us the following news. "I am honored to have recently been elected to serve as vice president for the board of directors of Generation Hope, a 501(c)(3) non-profit that helps D.C.-area teen parents achieve their dreams and create better lives for themselves and their children by obtaining their college degrees.

"Generation Hope achieves its mission by providing direct scholarships and long-term one-on-one mentoring to teen parents who are attending college in the Washington, D.C. metro area. Generation Hope is an incredible organization that has captured my heart. The teen parents we serve are some of the most motivated, self-sufficient individuals that I have ever met and their kids are adorable. I'd be thrilled to share more information with anyone who is interested!"

AJ worked in the swim department at camp and currently lives in Washington, D.C.

Lauren Winiker Kaplan (Circle 2005) and husband Mike, of Hillsborough, N.J., wrote to say that they are expecting their first baby! (it's a boy) "Little Kappie is due in April of 2015. Time to buy a piggy bank for camp tuition!"

Ronda Max Pozoulakis (Circle 2000) of Parkton, Md. informed us that her son Nick moved to Seattle, Wash. to work for Amazon, and has joined the Seattle Philharmonic. Needless to say, she is very proud of him. Ronda was a camper in the '70s and worked on staff as a nurse.

Esta Bablan Wolfram (Circle 1938, and married to former Airy counselor Victor Wolfram since 1945) of Walnut Creek, Calif. wrote to tell us about her 69th wedding anniversary, which was celebrated on November 14, 2014. Esta tells us: "Camp Louise was a big influence on my life. Miss Ida invited me to come in 1938 when I graduated from Forest Park High School, although I was only 15 years old. She split my time between bunk 23 and helping junior camp.

"I met Victor Wolfram in 1941, his only Airy year, when, although he was not at all interested in dating, he did ask me for a date at Cabaret Night, the final dinner/dance evening...then did not show up.

"Fast forward to a January birthday when I got his New York address and wrote, asking for an explanation. He did explain and asked if we could be friends. World War II found him in the Navy (and I engaged to another Airy counselor, to whom I wrote every day). "The war ended, my soldier came home from overseas and did not marry me...but Victor, stationed at Navy Pier in Chicago, did! We've had many adventures and now are old folks (91 and 94), living at Rossmoor, a gated community for seniors in Walnut Creek Calif.

"A delicious meal at Le Cheval, a Vietnamese restaurant, and many cards and greetings from friends helped us mark the day."

Esta was at camp from 1938-1946.

Suzanne Kintberger Perlman of Ellicott City, Md. wrote to tell us: "I have just retired for the second

time! I previously retired as a district manager with the Social Security Administration, and in October retired from my position as the SSA liaison with Chamberlin Edmonds, a healthcare company located in Atlanta, Ga."

Miscellaneous

AY Smith Lederman (Circle 1994) of Baltimore, Md., wrote to tell us about her new venture.

"I'm officially a Jamerry Nails independent consultant! If you are not familiar with Jamerry Nail Wraps, you need to check them out!

Lawrence Kravitz (Circle 1998) of Aberdeen, Md., wrote to report: "Returned from travel in southeastern Turkey, Northern Cyprus, Jordan, Israel, and Uzbekistan. Have always enjoyed the demonstrated handicrafts from this exciting region."

Roz Jacobs, who was a banker at Camp Louise for five years in the late '80s-early '90s, wrote from sunny Florida to say: "Hi up there in cold Maryland weather. I finally finished teaching in New York and Florida and have recently retired! I'm having a great time doing whatever I want.

"From being a workaholic, I've now become a volunteeroholic, with some free time left to abundantly exercise and do arts and crafts "stuff" -- two talents I started cultivating at camp.

"Seela, my daughter and a Louise camper, has graduated from University of Georgia, and is living in Atlanta and loving it totally."

Roz invites anyone who wants to reconnect with her to contact her at Midlad8918@aol.com.

Randi Moody Schnapper (Circle 1998) contacted us to say: "I am now selling Thirty-One Gifts. Contact me at randi.moody0809@gmail.com

with any questions you may have. Orders can be placed through my website at www.mythirtyone.com/randimoodly. If you would like to host a party feel free to contact me as well!"

Randi lives in Walkersville, Md. and was in the swim and dance departments at camp.

Sheila Cohen Hayes (Circle 1983) of East Granby, Conn., wrote to say: "I do not get to western Maryland as often as I would like, but decided to use some airline points and visit my dear friend Lisa Band, who I met in 1982, for a mini-weekend this past summer. For old time's sake, she took me to lunch at The Ott in Emmitsburg.

"To my surprise, while ordering, in walked in Lauri Wright, Beth Cohen, and Sybil Modispacher! No time had passed with these friends while stories circulated and catching up ensued. Lisa is not only a true friend, but exemplifies what a true Circle sister is!"

Sheila is a third generation Circle member. Sheila's grandmother, Selma Steinberg Bossowick, made Circle and Sheila's mom, Cynthia Bossowick Cohen, made Circle.

Karen Levin (Circle 1978) of Baltimore, Md. would like to connect with anyone who may be able to help her in her search for a paralegal position in Baltimore. You can contact Karen at: borninablizzard@gmail.com.



Famous Camp Louise Challah

Originally created by **Julie Kotler** and modified by **Laurie Rauseo Okin**

Ingredients

1 cup of water
 3 egg whites (reserve yolks, right before brushing add a tad of water)
 1 tsp. vanilla
 3 T. honey
 1 stick of margarine (can substitute ½ cup smart balance)
 ½ cup sugar (or Splenda, Stevia, etc. Taste will vary with different sugar or substitutes.)
 2 T. potato flakes
 1 tsp. salt
 5 cups bread flour
 1 T. yeast (Yeast container will say for the bread machine)

Put all ingredients in a bread machine in the order listed. Make on the Dough/Pizza Dough setting. It will make 2, one pound challahs. Divide dough into six sections, 8 for round. Braid three sections per challah (4 for round) on cookie sheet with parchment paper. Let rise 1 hour covered with clean kitchen towel or cling wrap. Brush with egg yolk wash and bake for 25-28 minutes on 350 degrees. Ovens may vary.

Note: Call me crazy, but in my opinion round and pulled a part taste better than long and sliced.



Circle Sponsorship

Would you like to support Circle by showing off your business card? For \$20 per issue, your business card will be placed in the Louise Lighthouse. Send your business card and a check payable to Camp Louise Circle to Iris Maslow at irism@camplouisecircle.org or mail to the Baltimore camp office at 5750 Park Heights Avenue, Baltimore, MD 21215.

FREE baby t-shirt!



Did you know?

If you or someone you know has recently welcomed a future Airy or Louise camper into the world, Camps Airy & Louise will send you a free baby shirt! All you have to do is send the baby's name, parent's name and address to iris@airylooise.org.

Camp also loves seeing pictures of the t-shirts in action so please send those to Iris as well!

Dedication Plaques

Plaques are available to honor or remember someone. The plaques are placed in the Dining Hall entrance and are a lasting tribute. Each plaque is \$300. If a smaller donation is made to honor a loved one, the appropriate person being honored will receive a Mitzvah Card. Refer to Page 12 for details.

If writing a donation check, please note "dedication plaque" on the memo line. Checks can be made payable to "Camp Louise Circle" and sent to Dani Hercenberg. Please email danih@camplouisecircle.org for an address.

If you have any questions about the plaques, please contact Ayme at aymel@camplouisecircle.org or 718.768.2838.

MID-WINTER GET TOGETHER

Saturday, January 24 • 2-4pm • Brunswick Bowling Lanes Columbia

\$25 per person includes 2 hours of bowling, shoe rental, pizza, soda and more!
Form your team of 4-5 bowlers or register individually and we can form a team for you.

Visit www.camlouisecircle.org for more information and to register.



Brunswick Bowling Lanes • 7100 Carved Stone • Columbia, MD 21045

This event is open to anyone. Proceeds benefit Camp Louise Circle.



Questions? Contact Paula Bragg at pjbragg@gmail.com or (410) 960-2218.

CIRCLE SISTERHOOD TREE OF LIFE

Thanks to the generous donation of Rita Drapkin, Circle 1988 and Past President, the Camp Louise Circle Board is pleased to introduce The Circle Sisterhood Tree of Life.

Created by artist Phillip Ratner, the metal sculpture of a tree trunk and branches was originally the “Sally K. Drapkin Tree of Life” and hung in Ohr Kodesh Congregation. It was transferred in the summer of 2014 to Camp Louise and now hangs in the White House. The Tree is prominently located inside the main entrance across from Activity Room 1, where nearly everyone passes when they come to Camp.

Leaves for “The Circle Sisterhood Tree of Life” can be purchased for \$118, which is 100% tax deductible! There is space on each leaf to engrave up to 4 lines of text with 25 characters per line, including spaces. Proceeds from every leaf will go towards Circle initiatives that support Camp Louise.

Contact Jen at jenr@camplouisecircle.org for further instructions to purchase a leaf.



Mitzah Cards

Honor and celebrate significant life events by giving a Mitzvah Card. You also have the option to purchase your own unlined note cards (FORM 2).



- Birthdays
- Anniversaries
- Well wishes of love and support
- Sympathy and condolences
- Special Occasions



If you submit FORM #1, there will be text depending on what you are commemorating. For example, "A contribution has been made to the Camp Louise Circle Fund by (Your name will go here)."

Contact Paula Bragg (pjbragg@gmail.com) for further instructions to submit a form and check.

FORM 1: Mitzvah Card Order Form

All proceeds benefit the General Circle Fund unless a specific fund is designated.

Contribution Amount

___ \$5.00 ___ \$10.00 ___ \$18.00 ___ \$36.00 \$_____ Other

Your Name: _____ Send Card to: _____

Address: _____ Address: _____

Address Line 2: _____ Address Line 2: _____

City: _____ City: _____

State: _____ State: _____

Zip Code: _____ Zip Code: _____

Information to include on Mitzvah card (check one):

Please print clearly.

☐ In Honor of _____

☐ In Memory of _____

☐ To Celebrate _____

By (Your Name): _____

Choose illustration (circle one):

The White House

The Library

FORM 2: Stationery Order

All proceeds benefit the General Circle Fund.

___ 1 card for \$2.00 ___ 10 cards for \$18.00

Choose illustration (circle one):

The White House

The Library



GOING GREEN

The Lighthouse newsletter will now only be distributed electronically.

To help save the environment and Circle's budget, after this issue, only those members who opt-in for paper mailings will receive their Lighthouse in the mail. All other Circle members will receive their copy of the Lighthouse via email. Lighthouse editions will also be posted on our facebook page and Circle's website.

To opt-in to paper mailings, please complete and send in the form below. If you or a friend would like to be added to Circle's email database, you may also use the form below. You do not need to send in the form if you already receive the Lighthouse via email.

NAME: _____

CIRCLE YEAR: _____

Select one:

☐

Please add me to Circle's email database.

I understand that I will no longer receive the Lighthouse in the mail.

EMAIL: _____

☐

Please continue to send me the Louise Lighthouse in the mail.

ADDRESS: _____



Send this form to Iris Maslow at the Baltimore Office:
5750 Park Heights Avenue, Suite 306, Baltimore, MD 21215



Camps Airy & Louise
5750 Park Heights Avenue, Suite 306
Baltimore, MD 21215

Non-Profit
U.S. Postage
Paid Baltimore,
MD Permit #428

Like us on Facebook
Visit our website at **camplouisecircle.org**

